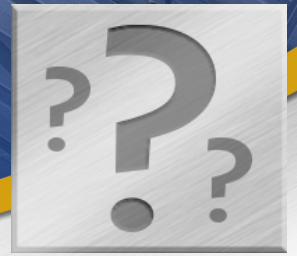




NEW MILLENNIUM
BUILDING SYSTEMS
Building a better steel experience.



DID YOU KNOW?

June 18, 2017

Boost Your Structural Steel IQ

One way to lower the cost of building design and construction and increase the performance of your teams is to make sure you are using the latest structural steel systems and techniques. In addition, we all have professional education requirements to meet each year to remain up-to-date on the latest developments in the industry. So a great way to reach both goals is by taking a convenient, AIA/PDH credit-hour course produced by New Millennium Building Systems.

New Millennium has partnered with Building Design & Construction University to offer easy online course options for your continuing education.

"Our AIA/PDH educational courses were developed to increase the performance and cost optimization of steel building projects by helping people understand the importance of upfront design integration for steel joists and decking," says Joe Buntyn, New Millennium Business Development Manager and Steel Joist and Deck Course Specialist.



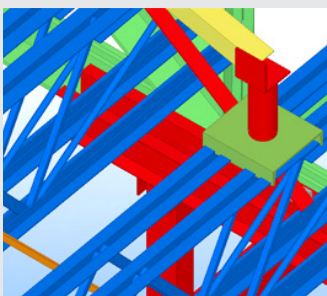
Course Lineup



Optimized Steel Deck Design

You'll get an overview of structural steel deck design and the ways to improve building performance and reduce total-project costs. Key areas of discussion include deck types, terminology, and design criteria. The course includes actual project examples of cost reduction and highlights the role of steel deck detailing in the mission-critical early steel building design process.

COURSE CREDITS: 1.0 AIA LU/HSW, 1.0 PDH

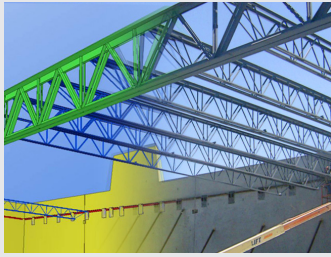


BIM Open Web Steel Joist Design

This course documents the cost and performance advantages of BIM when applied to steel joist design. Successful BIM joist design process management is demonstrated and independent research is shared regarding the need for greater adoption of BIM-based steel joist and deck design.

COURSE CREDITS: 1.0 AIA LU/HSW, 1.0 PDH

continued...



Design-Build Approach to Steel Joists and Metal Decking

Discover a range of project cost and performance improvements achievable by the design-build approach to steel joist and metal deck design.

COURSE CREDITS: 1.0 AIA LU/HSW, 1.0 PDH



Progressive Steel Joist and Metal Decking Design

This three-part video course takes a building owner's perspective on the range of cost and performance improvements that are possible when using a more design-analytical and collaborative approach to steel joist and metal decking construction, with recommendations ranging from early project conception to project delivery and related trade integration.

COURSE CREDITS: 1.0 AIA LU/HSW, 1.0 PDH



Steel on the Rise in Multifamily and Taller Mixed-Use Projects

This course is an article. Read it to learn how, thanks to a number of key innovations, steel is playing a greater role in residential high-rises, senior and student housing, and taller mixed-use developments. New structural approaches using steel have reduced floor-to-floor heights, getting closer to concrete slab thicknesses of 8–8½ inches. This allows more hospitality and residential buildings to take advantage of steel construction.

COURSE CREDITS: 1.0 AIA LU/HSW, 1.0 PDH



Knowledge and Innovation

New Millennium has always been a hub for the latest steel joist and decking innovations. It is also the place to go for the latest industry knowledge. To register for and take a course online, go to www.newmill.com/resources/education-courses.html

To learn more about New Millennium's education offerings, contact a Steel Joist and Deck Course Specialist:
www.newmill.com/contact/specialists/education-specialist.html



NEW MILLENNIUM
BUILDING SYSTEMS

Build a better steel experience... visit our website for complete information:

www.newmill.com